



**TOPAZ
LABS**

SURREAL HDR & VIBRANCE ENHANCEMENTS

Sample Project

In this project, we will walk you through a very quick and easy workflow that was submitted by one of our Topaz users.



Before Topaz Adjust

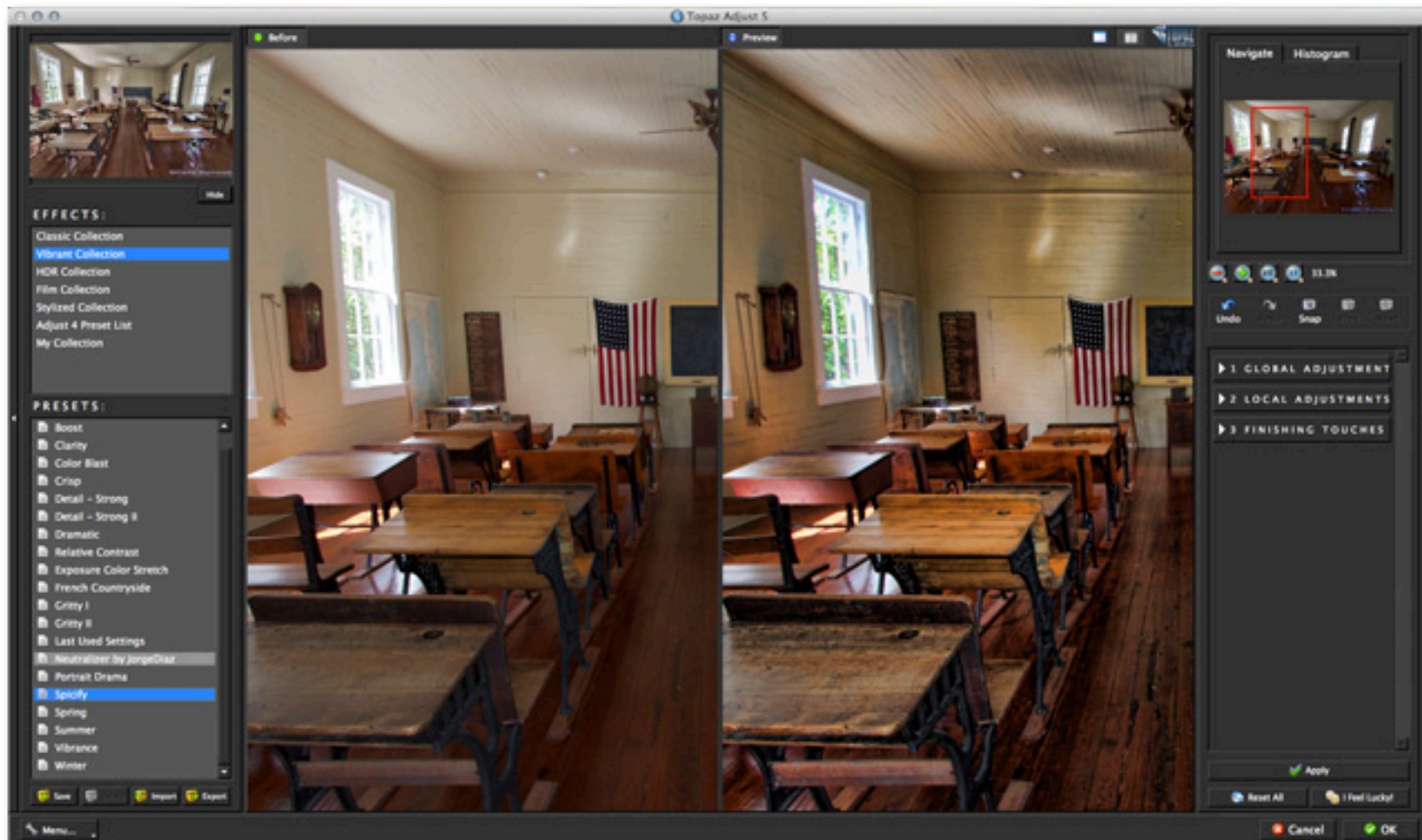


After Topaz Adjust

This workflow is going to allow us to create a surreal, HDR-like effect. For this example we will be working only the Spificy preset, a few of the sliders and Vibrance control (found in Photoshop, Lightroom and Aperture). So let's get started.

1. Open your image in Photoshop (or another compatible host program) and go to Filters -> Topaz Labs -> Adjust 5.
2. Once your image loads click on the Reset All button to clear any applied adjustments.
3. Use the zoom tools to zoom in on a specific part of your image. Then you can click on the preview and drag it around until you find an area that you like.
4. Go to your Effects / Presets panel on the left side of the screen and select the Vibrant Collection from the Effects Menu.
5. Scroll through the Preset list and find the Spificy preset. To select it, just click on it and the sliders will automatically adjust to the pre-defined settings and parameters.
6. Use the spacebar shortcut key to compare your before/after image in the preview window.

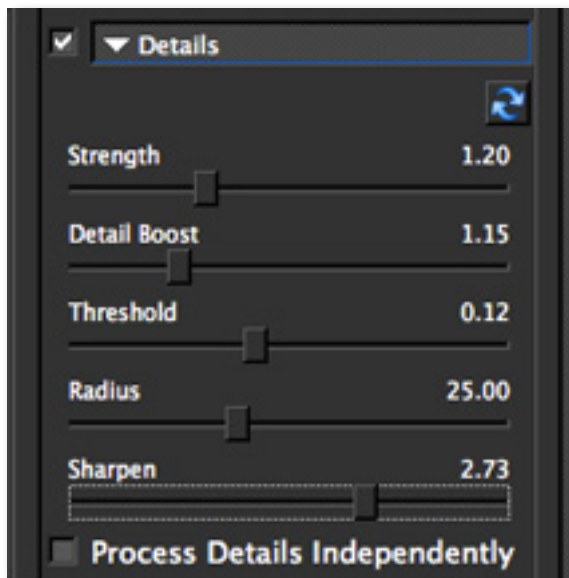
Topaz Adjust



6. Go to the Tool Panel and click on the Global Adjustment tab to reveal the sub-adjustment tabs.

We are going to do two things here: increase the sharpness and add some noise reduction to clean up the image a little bit.

7. Go to the Detail Tab and increase the Sharpen slider about 3/4's of the way or to about 2.75.



8. Go to the Noise tab and slowly increase the Amount and Suppression tab to remove any noise in your image.

Be sure not to over-apply the noise reduction because it can soften your and blur your important image detail.

9. Use the spacebar shortcut key to compare your before/after image in the preview window.

10. Click the "OK" button to process your changes and save your image back to Photoshop.

11. Increase the vibrance of your images following the instructions below for your host program...

Photoshop Users: Go to Image -> Adjustments and select Vibrance.

Aperture Users: Go to the Adjustments tab, look under the Enhance category to increase the Vibrancy slider.

Lightroom Users: Go to the Develop tab and look under the Presence category to increase the Vibrance.

When increasing the Vibrancy of your image be sure to do this incrementally and do not over apply this effect.

After that you are all set!



Before Topaz Adjust



After Topaz Adjust

Connect with Topaz



Check out our new **Forum** and our **blog** for tutorials, tips and updates from Topaz Labs!



Follow us on Twitter for notifications of recent news and easily get in touch with us whenever you feel like it!



Find us on our Facebook page and network with other Topaz users!



Participate in the entirely user-led Topaz Flickr group for a helpful and highly active community for Topaz Photoshop plug-ins!



Subscribe to our YouTube channel to keep up with any newly released product video tutorials!