



**ARTISTIC ENHANCEMENT WITH TOPAZ CLEAN**

# Workflow

## Sample Project

In this tutorial, we will walk you through a sample project, step-by-step, to help you become more familiar with the Clean program focusing on using a combination of presets and manual adjustments.



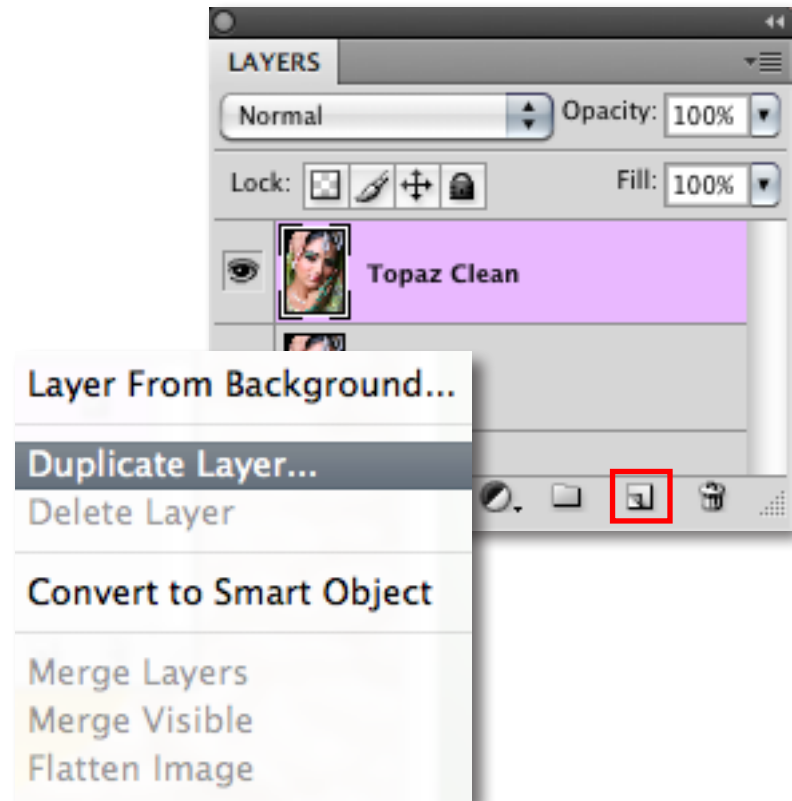
Before Topaz Clean



After Topaz Clean

We will be using this photo for our example. You can notice the artistic enhancement and detail enhancement in the before and after shots seen above. In the following steps we will be showing you how to achieve these optimal results with your own photos. Lets get started.

1. Open an image file.
2. Create a duplicate layer of your image. Right-click on your image layer in your layers and select “Duplicate Layer”. You can also achieve this by selecting your image layer and dragging it down to the new layer icon.



# Workflow

3. To begin working on your image go to Filters -> Topaz Labs -> Clean 3.

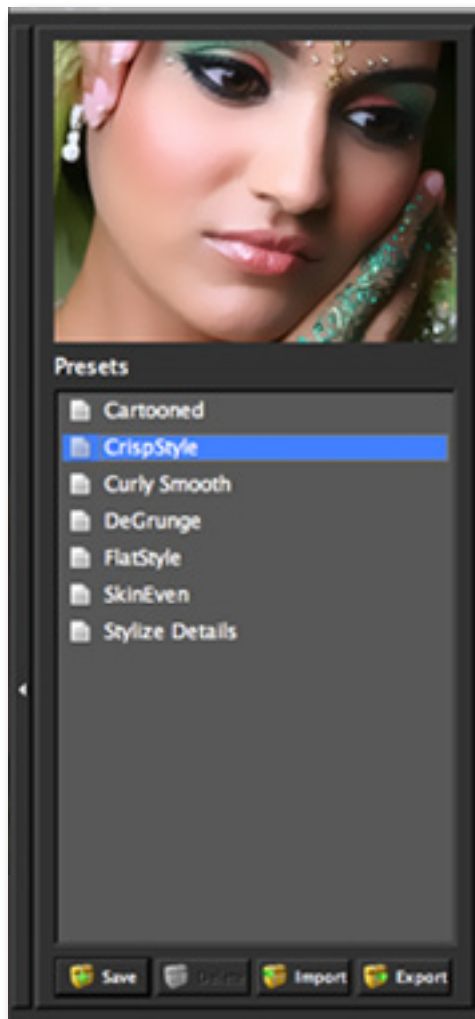
4. Once your image loads, use the zoom tools to zoom in on a specific part of your image. Then you can click on the preview and drag it around until you find an area that you like.

We want to take correct the exposure of this image and recover color and detail to reestablish the character of the image scene. To achieve this we will be working with the presets and detail sliders for this example, but you can start any way you like.



# Workflow

5. If you want to choose a default preset, scroll through the panel on the left side of the screen. To select it, just click on it and the sliders will automatically adjust to the pre-defined settings and parameters. For this example we will be using the Crisp Style preset.



If you are satisfied with the preset adjustments then you can click “OK” to process your image and save it back to Photoshop.

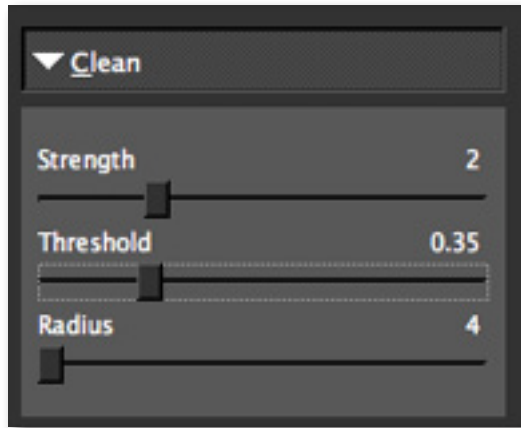
If you would like to make some additional adjustments to your enhancement settings then you can do so by adjusting any of the sliders in the three tabs manually until you achieve your preferred image results.

Don't forget that you can use the shortcut keys in Topaz Clean 3 to speed up your workflow.



# Workflow

6. Start in the Clean tab. It is a good idea to begin here, and then progress to the Edges and Texture tabs in order to see the effects of your adjustments easily.



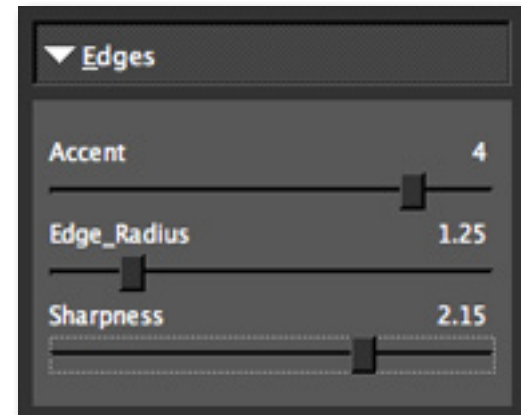
7. Slowly adjust each of the sliders to create the optimal exposure in your image. Adjusting the Strength slider will smooth the texture and weaken image details. The higher the Strength value is, the more pronounced effects you will see.

8. You can also change the strength of the detail reduction by increasing the “Threshold.” Also, adjusting the “Radius” will alter the reach of the effect; increasing this parameter will create a flatter image. Too high a value will result in a loss of texture and detail. For this example we will slightly lower the Threshold and Radius sliders.

You can enhance the appearance of the details in your image by increasing the Sharpness slider.

When you are happy with the Clean settings, move on to the Edges tab to stylize the edge details in your image.

9. You can start with “Accent” to increase or decrease the edge smoothness in your image. Move this slider higher than 2 to decrease edge smoothness and below 2 to increase it. A higher value will also render curly-looking effects.

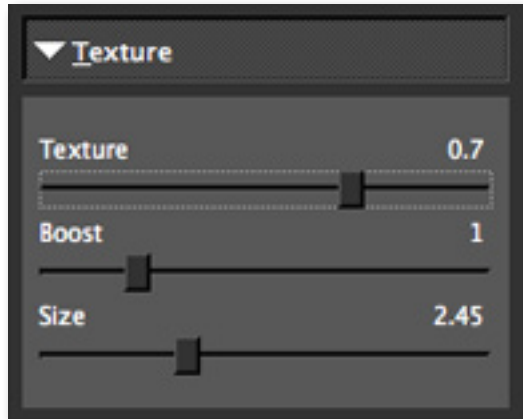


10. If you want to modify the size of your edges use the “Radius” slider.

11. Then, if you want to make the edges of your image stand out more, you can do so by adjusting the “Sharpness”. Using a higher setting will produce more pronounced edges with higher contrast. For this example we will slightly increase the Edge Radius and Sharpness sliders.

# Workflow

12. Next, move to the Texture tab. Here you can refine your image's features by reapplying original features. This will give your image a natural look.



13. If you want to reduce the smoothness of your image without increasing detail then increase the “Strength” slider. Be careful not to over-use this slider, doing so will make your image appear extremely grainy.

Use the “Boost” and “Size” sliders to define the texture in your image.

14. Increase “Boost” to increase the intensity of smaller details. Increase “Size” to preserve more original image detail. Be careful not to over-use these sliders, doing so will make your image, grainy, fuzzy colorful.

Tip: If you experience a loss of color intensity you can easily revive it in Photoshop. Just go to Image -> Adjustments -> Hue / Saturation and adjust the Hue and Saturation sliders until you are satisfied. Or you can use Topaz Adjust!

14. All that's left now is to click OK and watch your image transform.



Before Topaz Clean



After Topaz Clean

# Workflow



Before Topaz Clean



# Workflow



After Topaz Clean



# Shortcut Keys

Topaz Clean uses some shortcut keys to speed up your workflow. Many of these keys are similar to those in Photoshop. The following keys work at all times.

Action	MAC Shortcut	PC Shortcut
View Original Image	Spacebar	Spacebar
Reset All	CMD-ALT-R	CTRL-ALT-R
Zoom to Fit	CMD-o	CTRL-o
Zoom to 100%	CMD-ALT-o	CTRL-ALT-o
Zoom In	+ or CMD - +	+ or CTRL - +
Zoom Out	- or CMD - -	- or CTRL - -
Undo	CMD -Z	Ctrl - Z
Redo	CMD - Shift - Z	Ctrl - Shift - Z

## ADDITIONAL SHORTCUTS

Action	Shortcut
C	Expands / Collapses Clean Tab
E	Expands / Collapses Edges Tab
T	Expands / Collapses Texture Tab
Left or Right Arrow Key	Scrolls through presets
Return (enter) key	Applies selected preset
[ key	Reduces selected slider value by 0.1
] key	Increases selected slider value by 0.1
Home Key	Set the slider value to minimum
End Key	Set the slider value to maximum
Double-click slider name	Resets the slider value to 0

## Connect with Topaz



Check out our new **Forum** and our **blog** for tutorials, tips and updates from Topaz Labs!



Follow us on Twitter for notifications of recent news and easily get in touch with us whenever you feel like it!



Find us on our Facebook page and network with other Topaz users!



Participate in the entirely user-led Topaz Flickr group for a helpful and highly active community for Topaz Photoshop plug-ins!



Subscribe to our YouTube channel to keep up with any newly released product video tutorials!

# Contact Information

## Topaz Labs LLC

5001 Spring Valley Road  
Suite 400 East  
Dallas, TX 75244

## Technical Support

Visit: <http://topazlabs.com/support/>

Topaz Labs LLC, a privately owned company in Dallas, Texas, focuses on developing advanced video and image enhancement technology. With today's widespread use of digital still cameras, digital video cameras, and HDTV, the need for high-quality digital images and videos has greatly increased. Topaz Labs' mission is to bring practical state-of-the-art image and video enhancement technology to both professionals and consumers.

# Be sure to check out the complete line up of Topaz products.

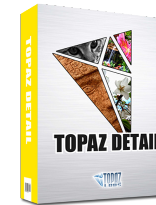
## Image Plug-ins



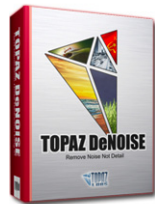
Ultimate control over image exposure, detail, and color gives you the power to make your photos pop.



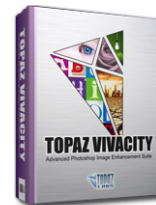
Advanced JPEG artifact reduction filters eliminate JPEG compression artifacts while preserving image detail like never before.



3 levels of intricate and specific detail enhancement for naturally enhanced images with no halos.



Advanced noise reduction filters noise while maximizing and retaining image detail simply and effortlessly.



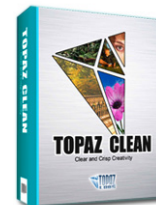
Specializes in overall image improvement. Features sharpening, re-constructing, enlarging, high-quality noise removal and JPEG artifact damage tools.



Remove unwanted backgrounds from your digital images quickly and easily with the new Topaz ReMask.



Takes any of your regular photos and effortlessly turn them into beautiful works of art.



Specializes in creating crisp and stylized images. Also features extensive smoothing capabilities.



Bring the power of Topaz to your Aperture, iPhoto and Lightroom workflow with the new Fusion Express plug-in.

## Video Plug-ins



Increase video quality with this suite of video enhancement filters utilizing super-resolution technology.



Easily and efficiently capture video frames and significantly increase their quality and resolution with this stand-alone Windows application.

Go to <http://www.topazlabs.com/downloads> to get your 30-day free trial!